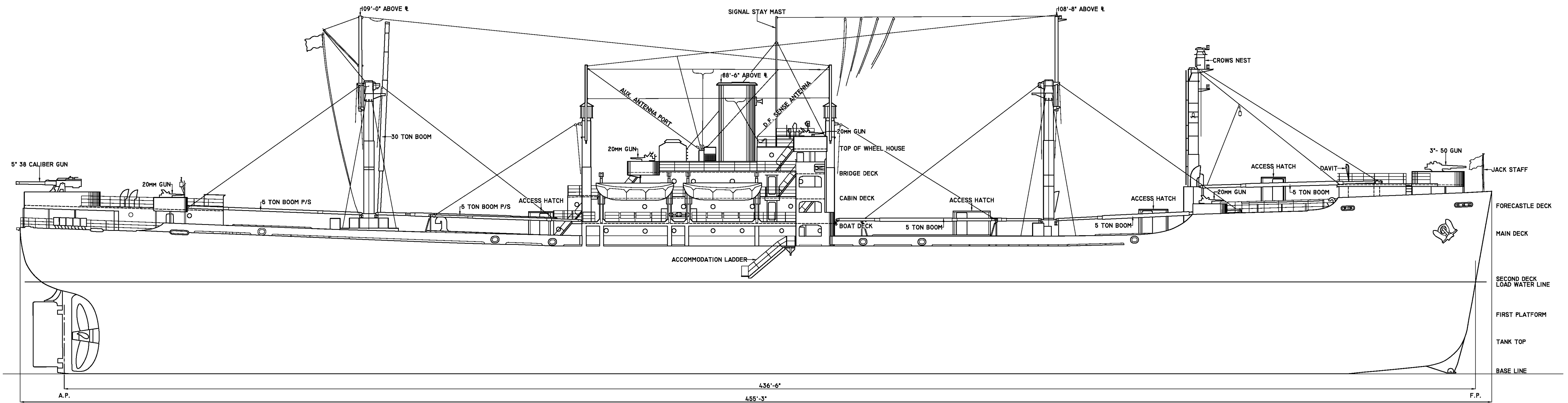
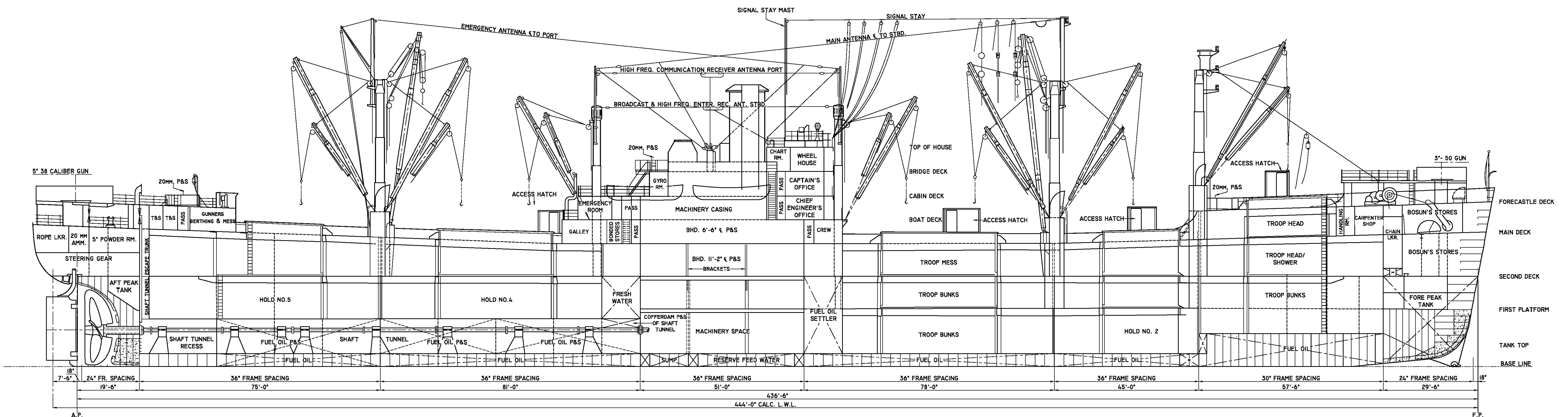


# Private Frederick C. Murphy

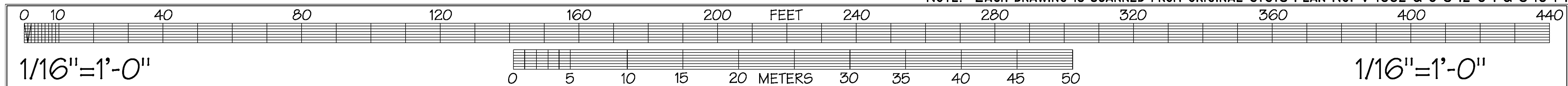


OUTBOARD PROFILE



INBOARD PROFILE

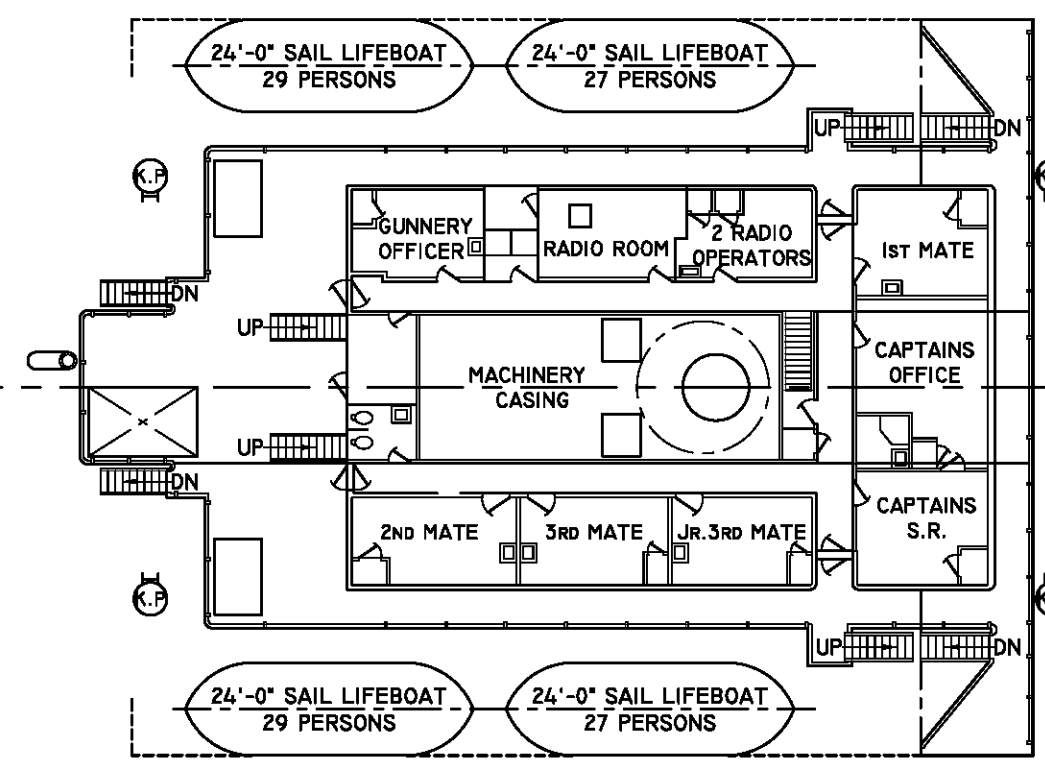
NOTE: EACH DRAWING IS SCANNED FROM ORIGINAL G.G.S PLAN No. V-1662 & 3 S-12-6-1 & S-16-1-1



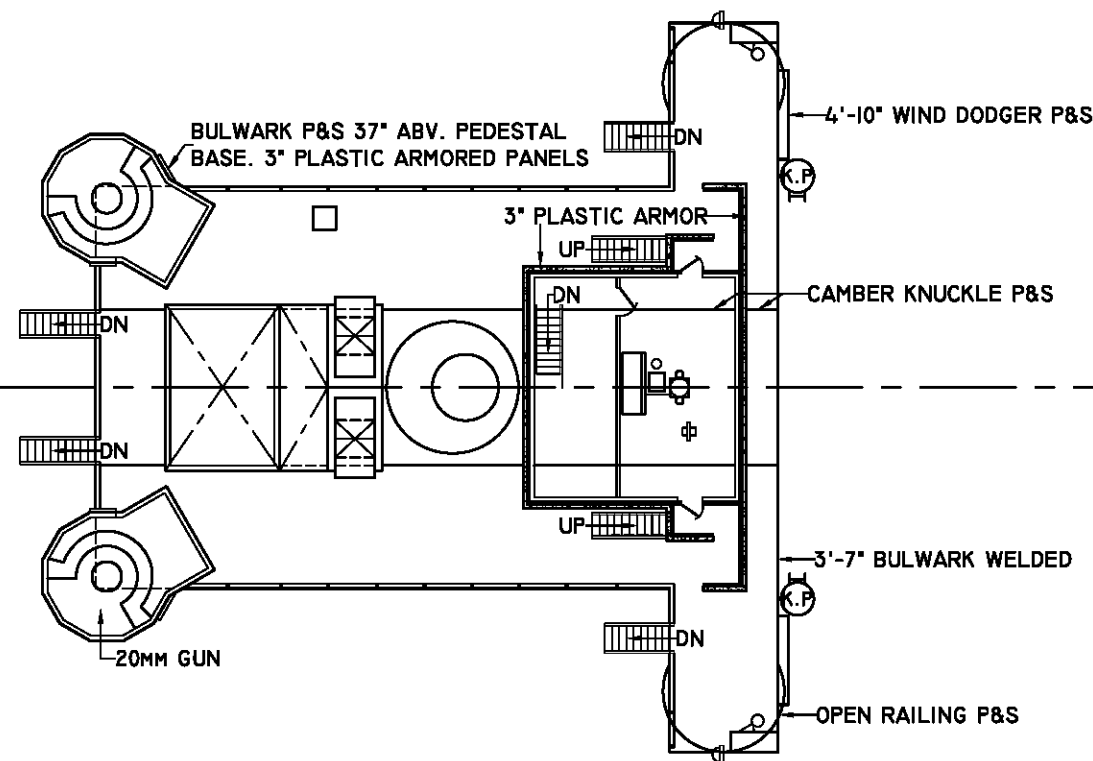
SCANNED FROM HISTORIC DRAWINGS AND REFORMATTED BY: SANDRA HEARD, 2006 & ASHLEY T. WALKER, 2009  
 PRIVATE FREDERICK C. MURPHY (MARITIME VICTORY)  
 BEAUMONT RESERVE FLEET  
 JEFFERSON COUNTY  
 TEXAS 2 OF 7  
 SHEET  
 HISTORIC AMERICAN ENGINEERING RECORD  
 INDEX NUMBER  
 TX-110  
 BEAUMONT  
 UNITED STATES DEPARTMENT OF THE INTERIOR  
 NATIONAL PARK SERVICE  
 RECORDING PROJECT  
 HAER MARITIME

IF REPRODUCED, PLEASE CREDIT THE HISTORIC AMERICAN ENGINEERING RECORD, NATIONAL PARK SERVICE, NAME OF DEDICATOR, DATE OF DRAWING

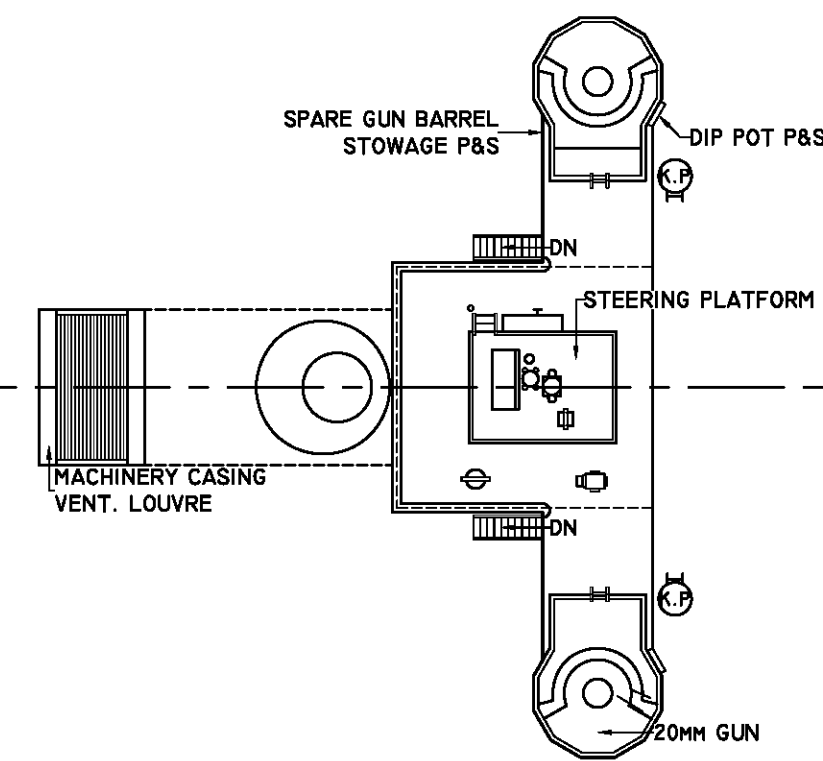
# Private Frederick C. Murphy



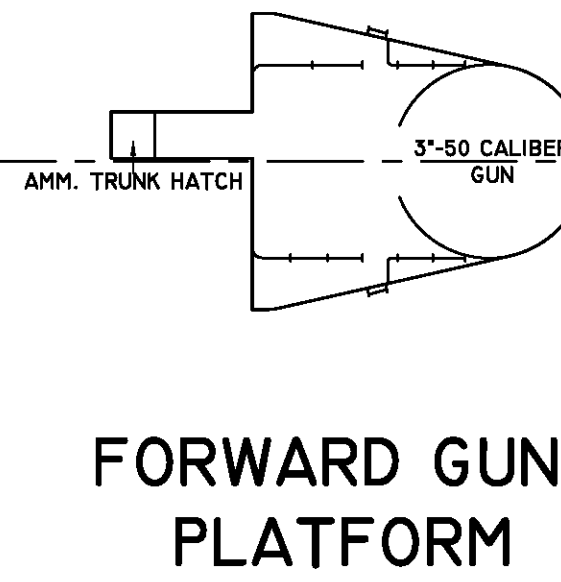
CABIN DECK



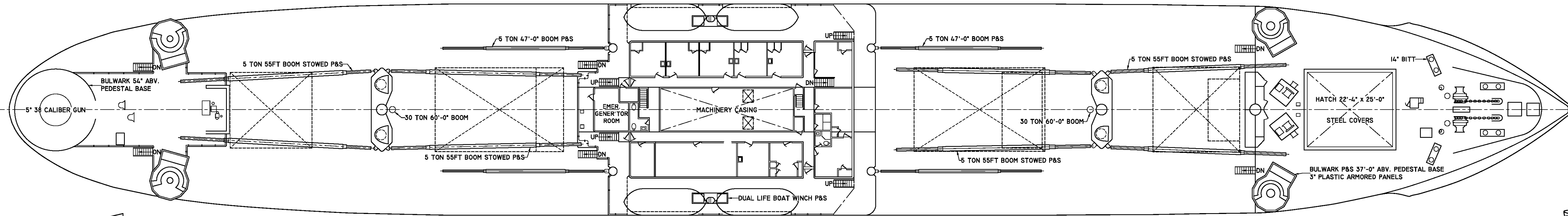
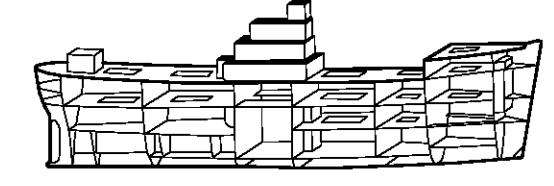
BRIDGE DECK



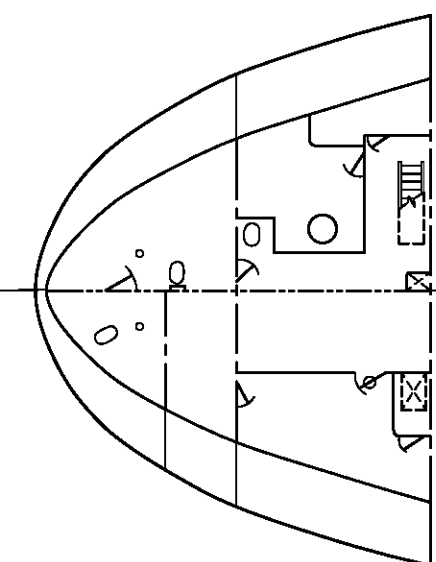
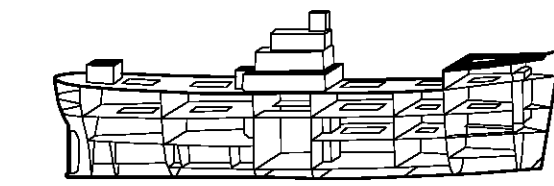
TOP OF WHEEL HOUSE



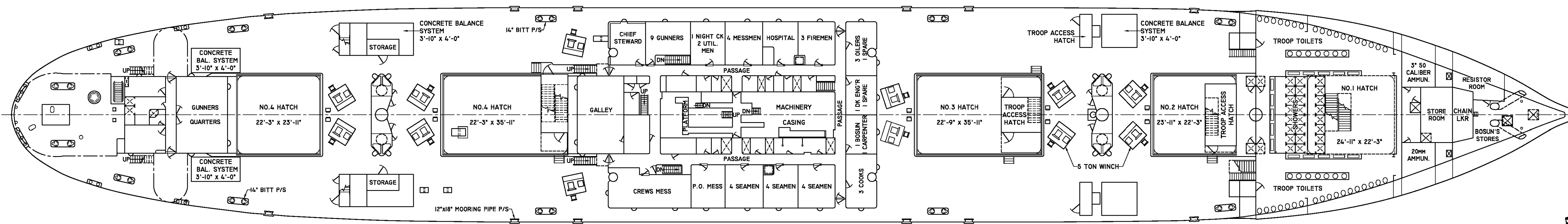
FORWARD GUN PLATFORM



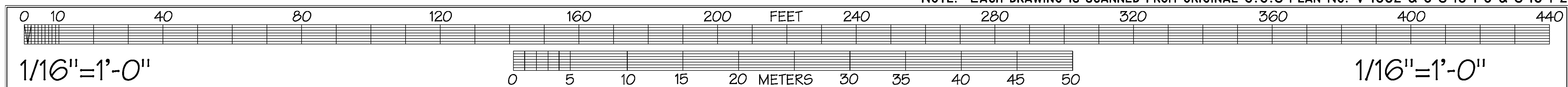
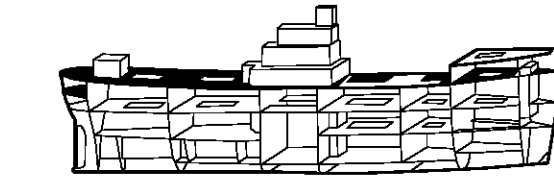
FORECASTLE DECK



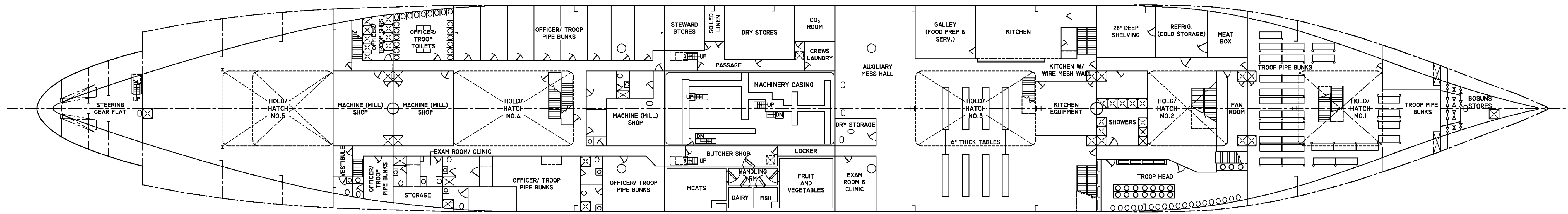
STORES  
FLAT AFT.



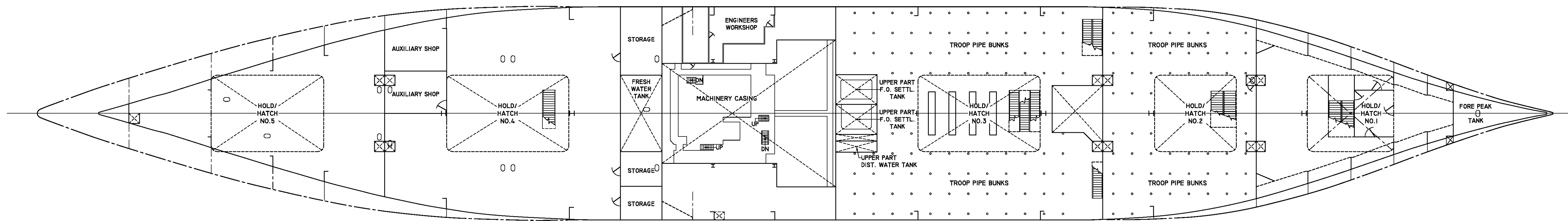
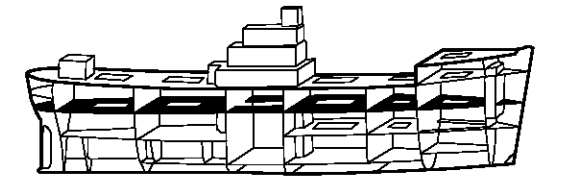
MAIN DECK



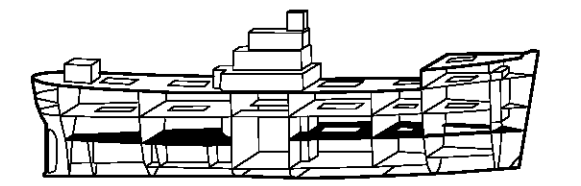
# Private Frederick C. Murphy



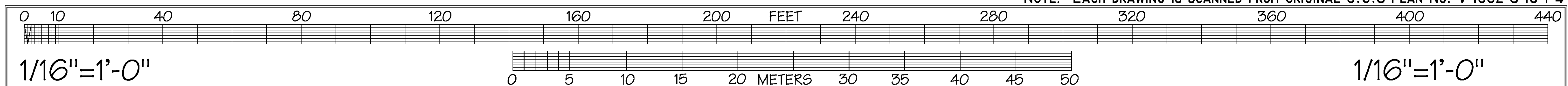
SECOND DECK



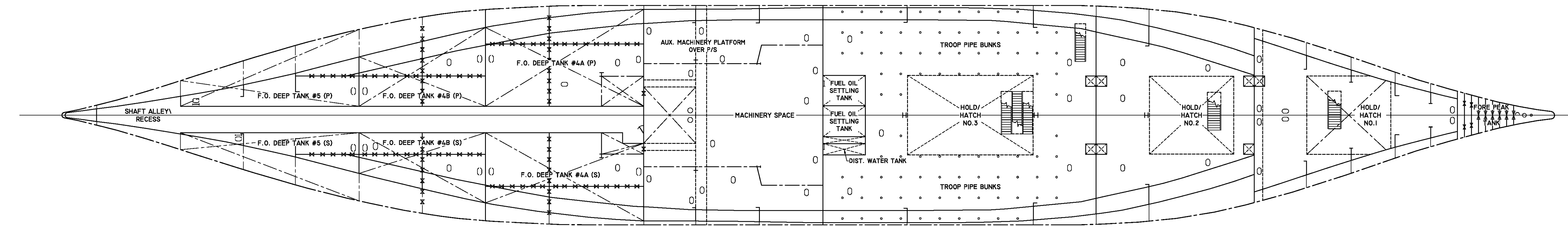
FIRST PLATFORM



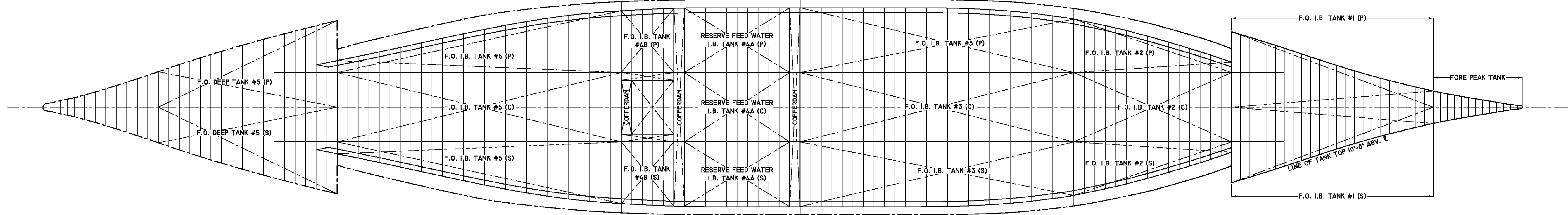
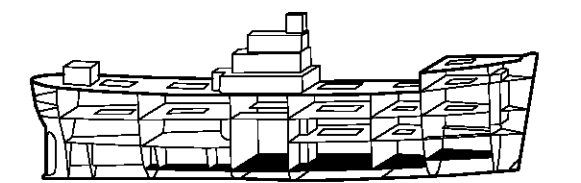
NOTE: EACH DRAWING IS SCANNED FROM ORIGINAL G.G.S PLAN No. V-1662 S-16-1-4



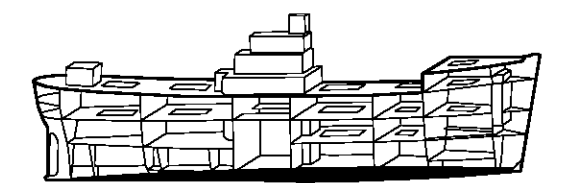
# Private Frederick C. Murphy



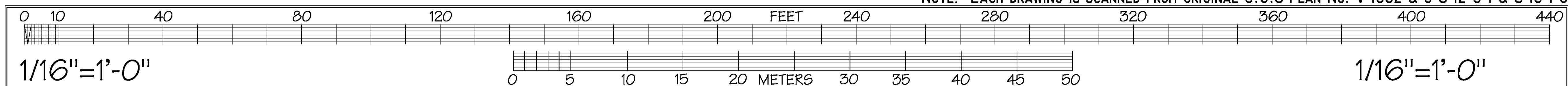
HOLD



INNER BOTTOM



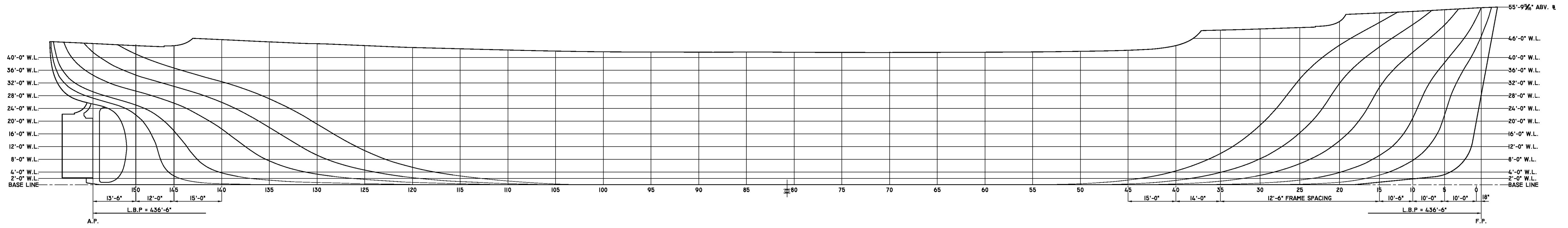
NOTE: EACH DRAWING IS SCANNED FROM ORIGINAL G.G.S PLAN No. V-1662 & 3 S-12-6-1 & S-16-1-5



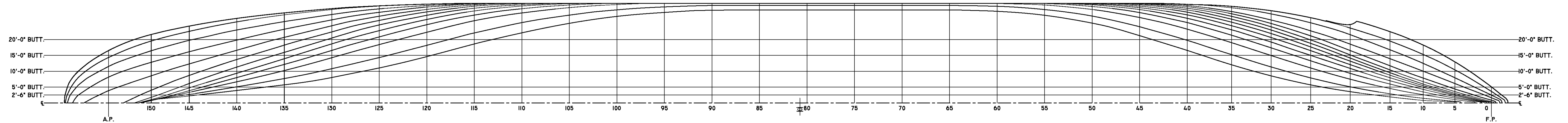
1/16" = 1'-0"

1/16" = 1'-0"

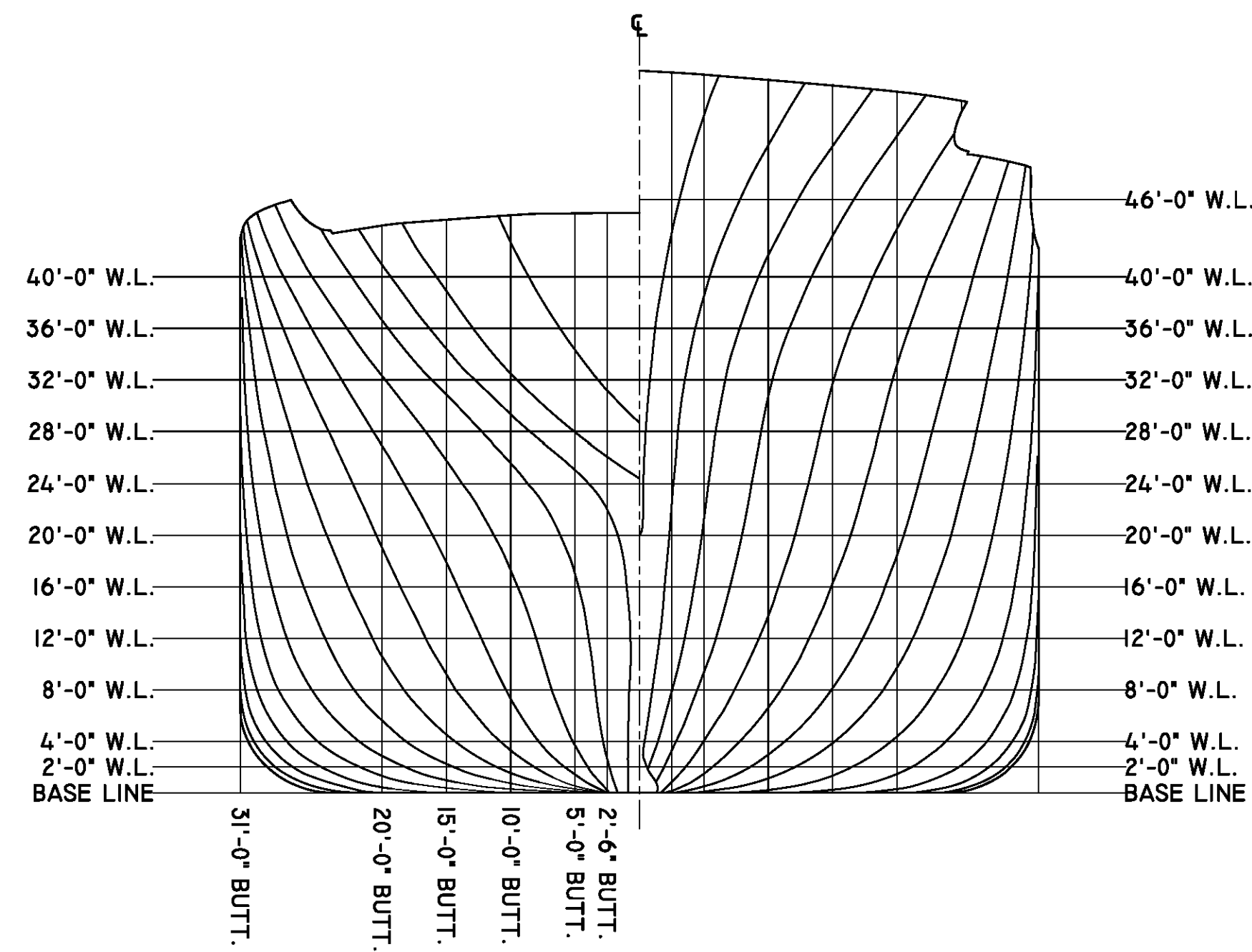
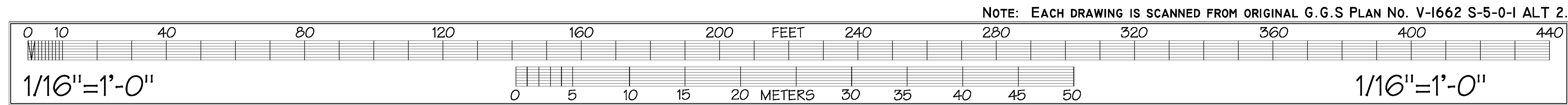
# Private Frederick C. Murphy



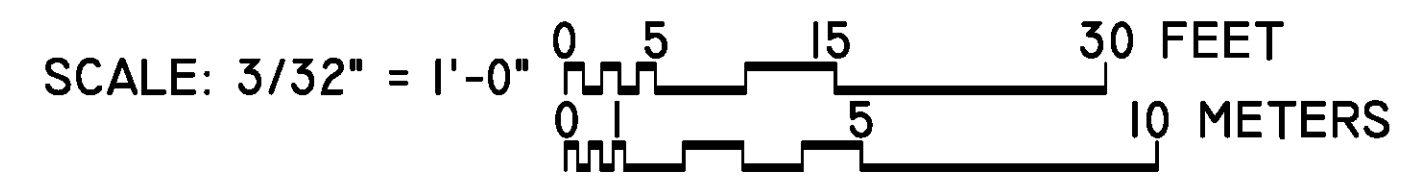
SHEER PLAN



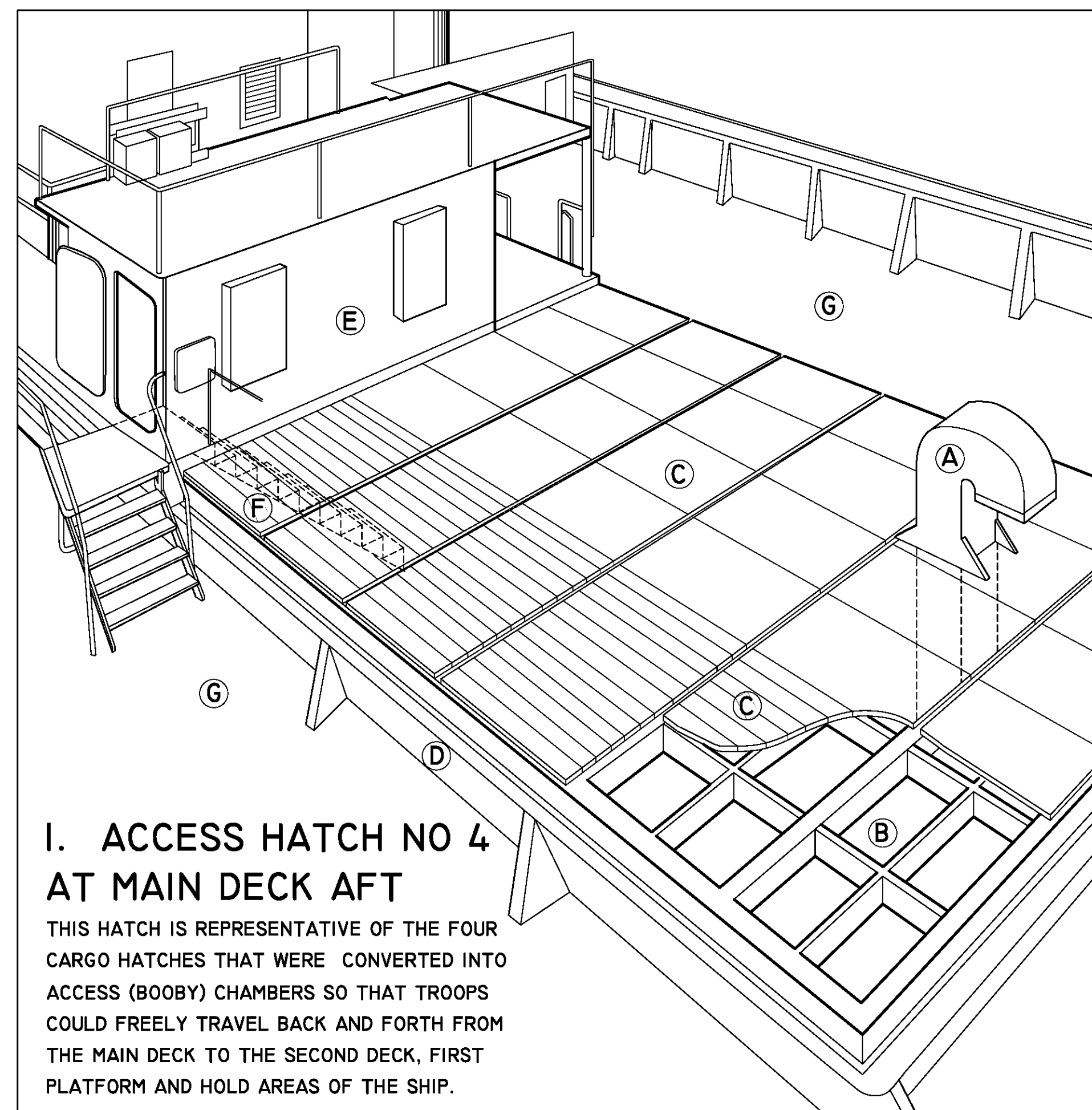
HALF-BREADTH PLAN



BODY PLAN







### 1. ACCESS HATCH NO 4 AT MAIN DECK AFT

THIS HATCH IS REPRESENTATIVE OF THE FOUR CARGO HATCHES THAT WERE CONVERTED INTO ACCESS (BOOBY) CHAMBERS SO THAT TROOPS COULD FREELY TRAVEL BACK AND FORTH FROM THE MAIN DECK TO THE SECOND DECK, FIRST PLATFORM AND HOLD AREAS OF THE SHIP.

A. CANDY-CANE SHAPED METAL VENTILATION STACKS PROVIDED MUCH NEEDED AIR CIRCULATION THROUGHOUT TROOP BERTHING AREAS BELOW MAIN DECK

B. METAL BOX BEAMS, APPX. 6" DEEP, WERE USED TO FRAME AND SPAN THE WIDTH OF THE ORIGINAL CARGO HATCHES, PROVIDING A TEMPORARY ROOFING AND COFFERED CEILING SYSTEM ABOVE HOLDS AT SECOND DECK

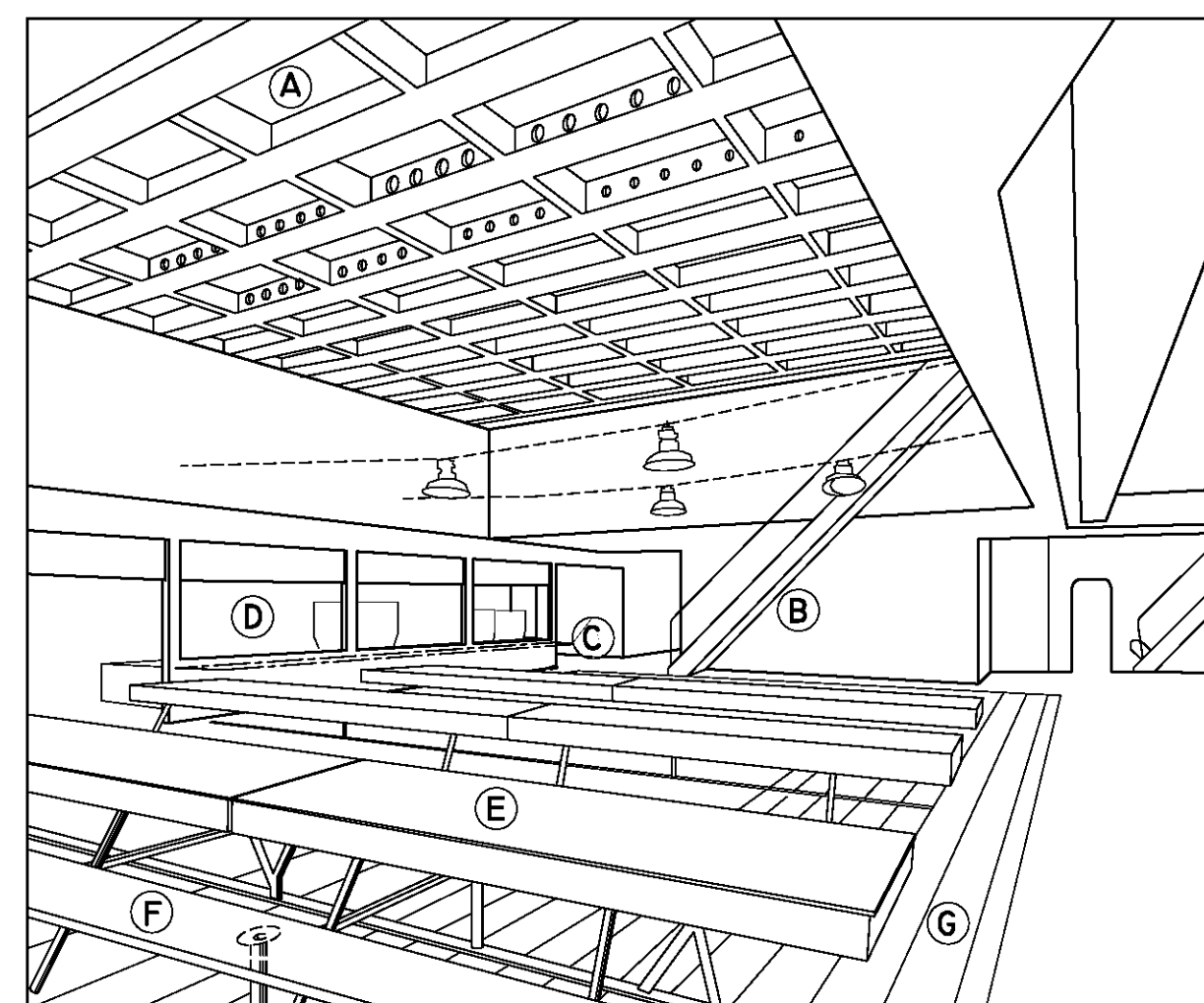
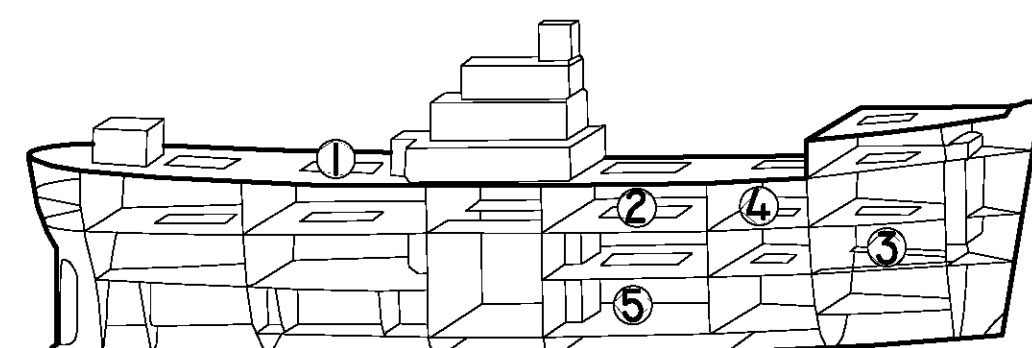
C. WOOD PLANKS RESTED ABOVE METAL FRAMING SYSTEM

D. METAL KNEE-HIGH WALLS, WITH BUTTRESSES SPACED AT REGULAR INTERVALS, ENCLOSED ALL FIVE HATCHES. HEIGHT OF KNEE-HIGH WALLS: APPX. 3'-0"; SEE OUTBOARD AND INBOARD PROFILES

E. PRECAST METAL ACCESS TROOP HATCHES CONSTRUCTED ABOVE ORIGINAL CARGO HATCHES WITH STAIRS LEADING TO TROOP BERTHING AREAS BELOW THE MAIN DECK. TYPICAL HEIGHT OF ACCESS HATCHES: 7'-2"; WIDTH VARIES, SEE MAIN DECK PLAN

F. METAL STAIRS LEADING DOWN TO SECOND DECK

G. FLOOR OF MAIN DECK



### 2. GALLEY AND MESS HALL AT SECOND DECK, HOLD NO 3

A. METAL BOX BEAMS PROVIDE CEILING ABOVE MESS HALL

B. METAL STAIRS LEADING UP TO MAIN DECK

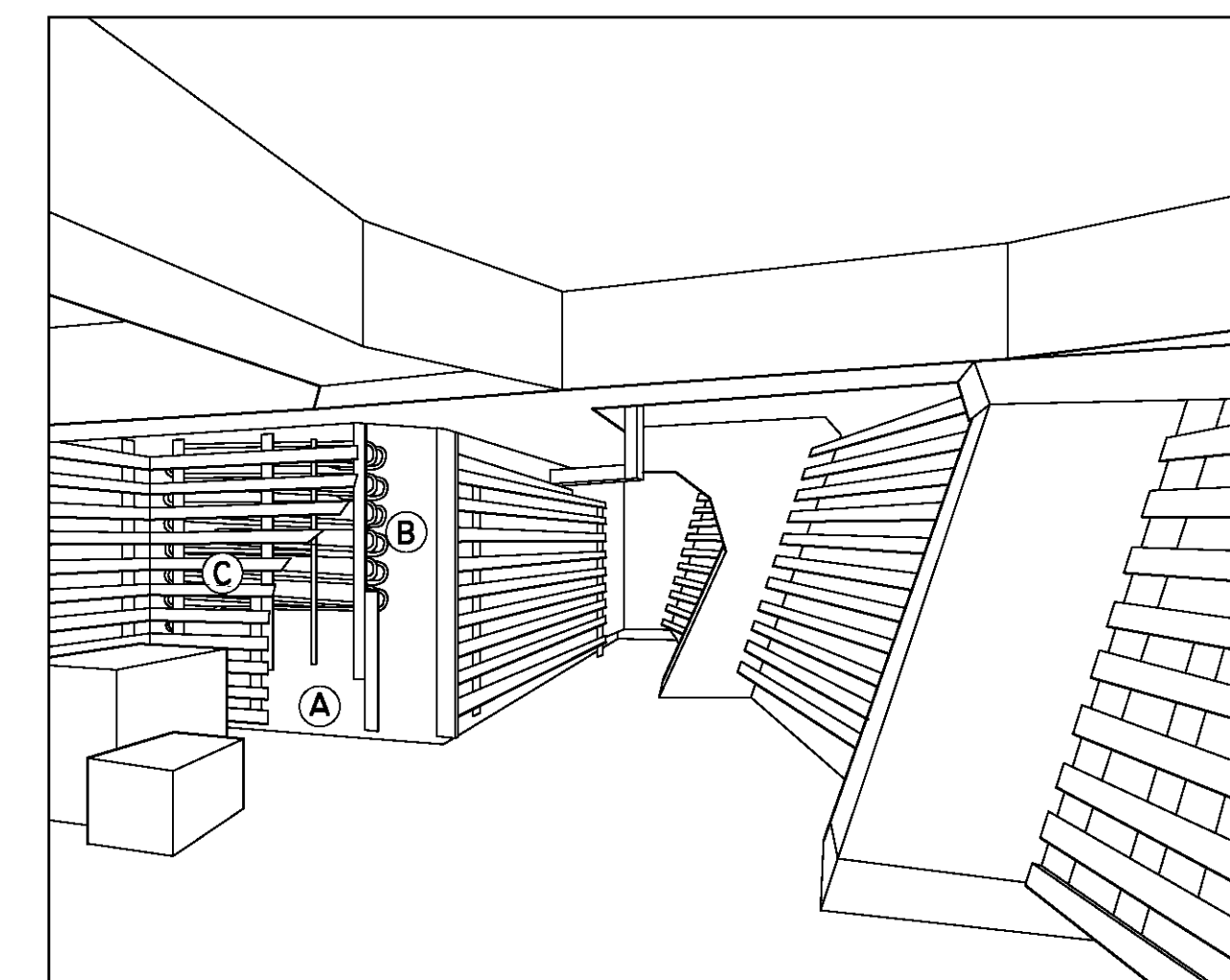
C. SERVING AREA LOCATED IN FRONT OF GALLEY

D. GALLEY: FOOD PREPARATION AND SERVING AREA

E. ONE OF FOUR 6" THICK WOODEN TABLES, SPACED 6'-0" CENTERLINE TO CENTERLINE OF EACH TABLE TOP AND BOLTED TO WOOD PLANK FLOORING WITH METAL PLATES. TABLE WIDTH 2'-1 1/2"; LENGTH 12'-0"; HEIGHT 2'-8"

F. WOODEN BENCHES CONNECTED TO WOOD TABLES WITH METAL SUPPORTS

G. WOOD PLANK FLOORING, SPANNING THE WIDTH AND LENGTH OF HOLD OPENING ABOVE.



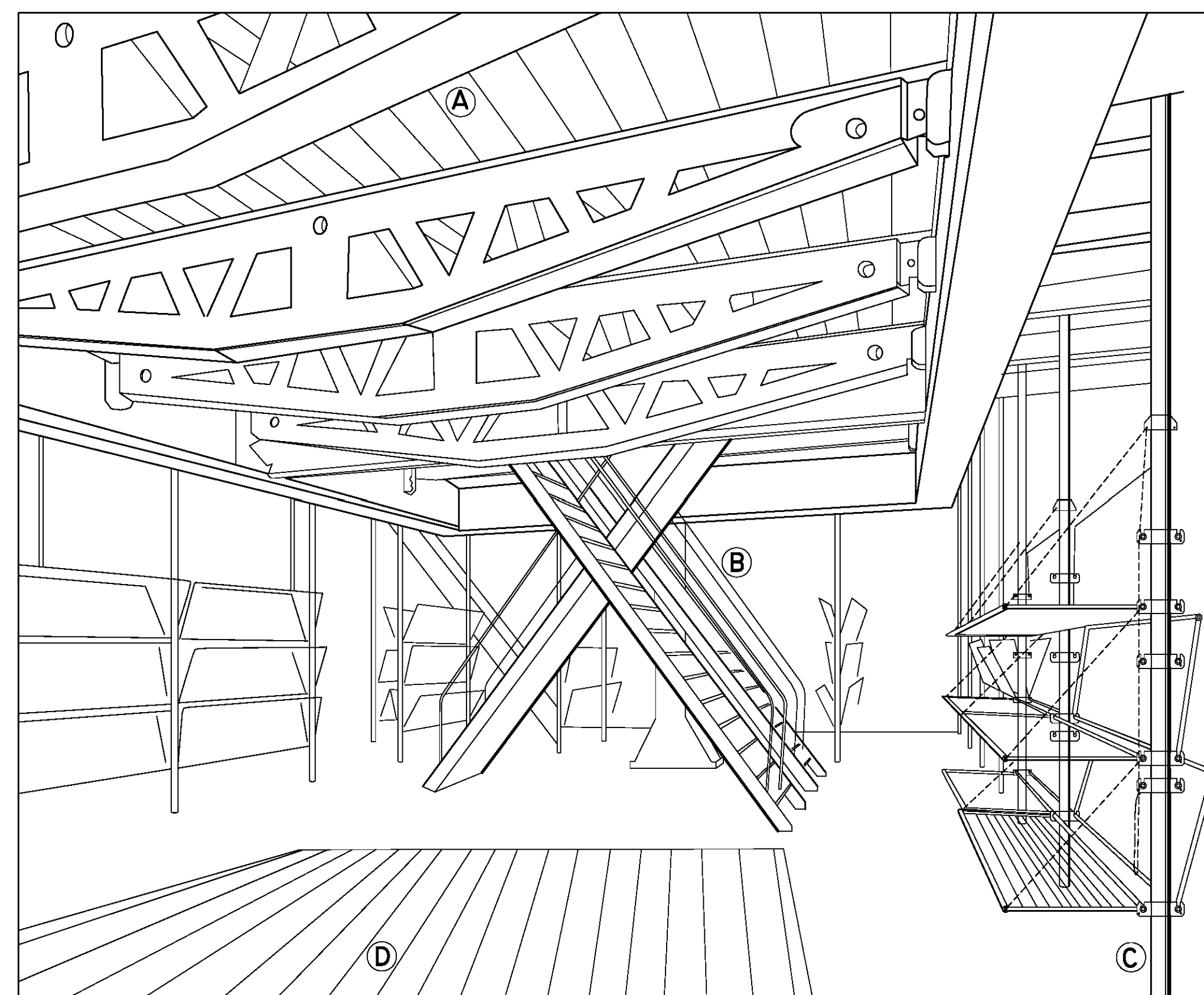
### 3. REEFER (REFRIGERATOR) AT HOLD NO 1 FORWARD

THE ABOVE COLD STORAGE AREA WAS USED TO STORE PERISHABLE ITEMS. COLD STORAGE REEFERS WERE LOCATED AT THE SECOND DECK, HOLD NO 2 AND AT THE FIRST PLATFORM, HOLD NO 1. SEE SECOND DECK AND FIRST PLATFORM PLANS.

A. INTERIOR WOOD FRAME WALL OF REEFER

B. METAL REFRIGERANT COILS USED TO KEEP STORAGE AREA COLD

C. 2" X 4" AND 2" X 6" WOOD FRAMING ATTACHED TO INTERIOR TO PROTECT COILS FROM POSSIBLE DAMAGE THAT COULD OCCUR WHEN LOADING AND UNLOADING PERISHABLE FOODS.



### 5. PIPE BUNKS AT HOLD LEVEL, HOLD NO 3

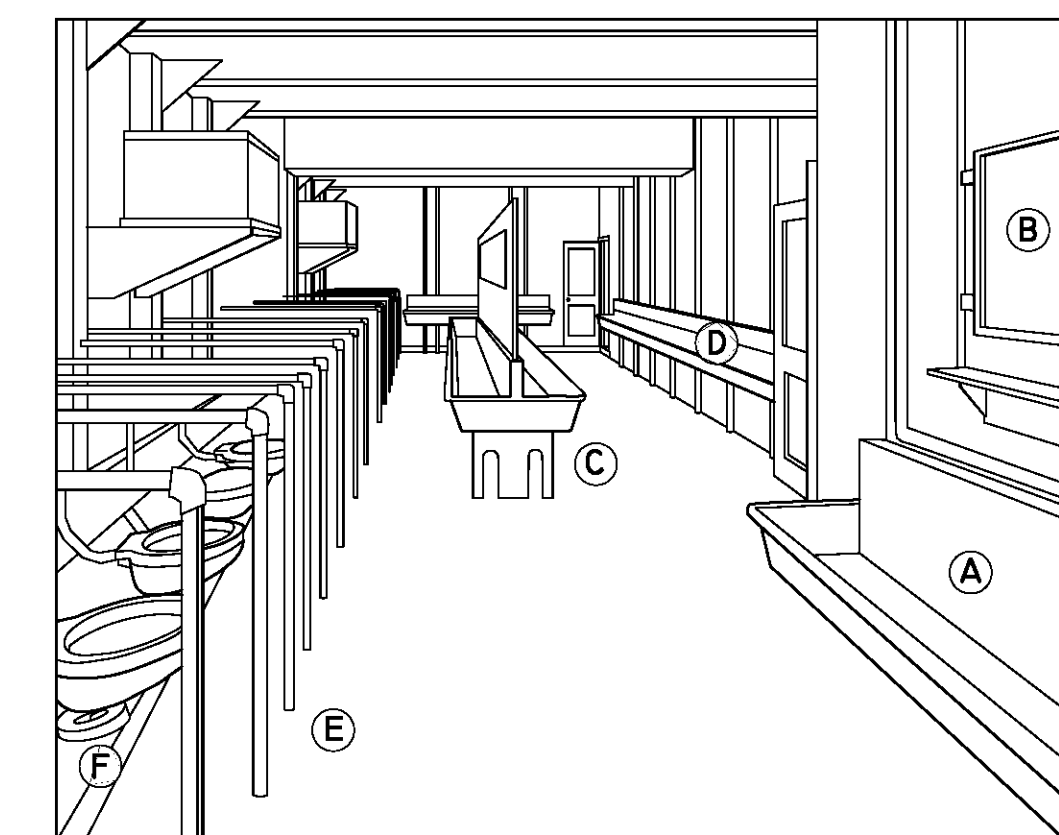
THE IMAGE TO THE LEFT IS REPRESENTATIVE OF TROOP SLEEPING QUARTERS, WHICH WERE LOCATED AT THE SECOND LEVEL, HOLD NO 1; FIRST PLATFORM, HOLD NOS 2 & 3 AND THE HOLD LEVEL LOCATED AT HOLD NO 3.

A. CEILING: PREFABRICATED REMOVABLE TRUSSES WITH WOOD PLANKS ABOVE

B. METAL STAIRS LEADING TO FIRST PLATFORM

C. PIPE BUNKS: VERTICAL STRUCTURAL MEMBER, 4" TO 6" WIDE METAL PIPE, WHICH SUPPORTS WIRE MESH BEDS, APPX 2'-0" X 6'-0". BEDS ARE CONNECTED TO PIPE WITH METAL LINKED CHAIN AND PREFABRICATED METAL FASTENERS.

D. WOOD PLANK FLOORING SPANNING THE LENGTH AND WIDTH OF THE HOLD OPENING ABOVE



### 4. TROOP TOILETS, URINALS AND SINKS AT SECOND DECK, HOLD NO 2

A. METAL SINK

B. MIRROR ABOVE METAL SINK

C. METAL SINKS

D. METAL URINALS

E. PORCELIN TOILETS WITH METAL PIPE FRAMING SEPARATING INDIVIDUAL STALLS

F. METAL SUPPORT SYSTEM SPANNING THE ENTIRE LENGTH OF TOILET STALLS (19 TOILETS TOTAL). SEE SECOND DECK PLAN