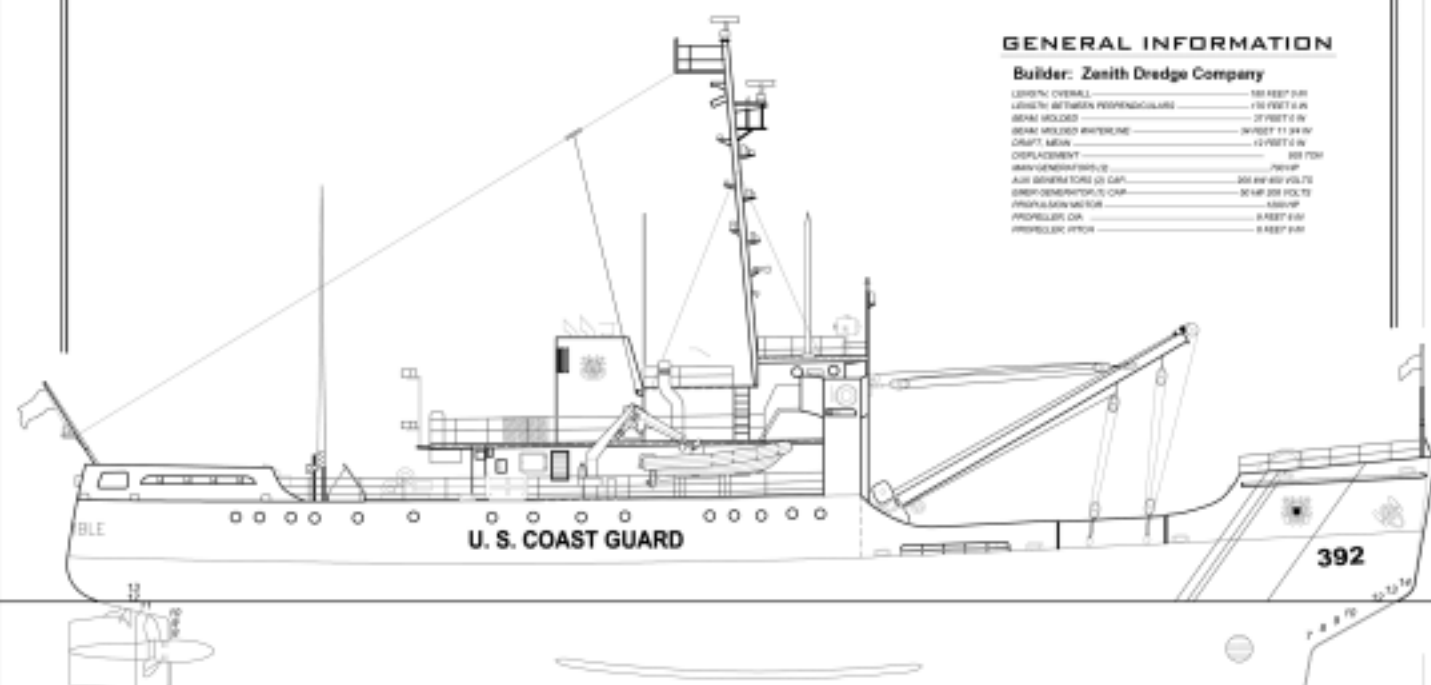


(IRIS CLASS)

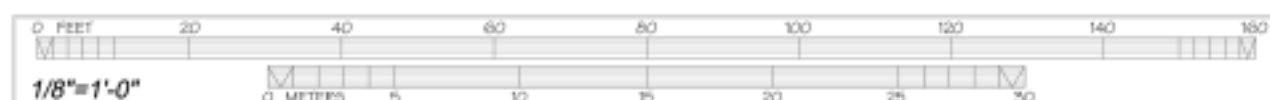
Commissioned

GENERAL INFORMATION

Builder: Zenith Dredge Company

[illegible]

OUTBOARD PROFILE



NOTE: This drawing was traced from original design drawings of the USCG Cutter BRAMBLE. HAER did not field check dimensions or arrangement of features; see HAER Field Notebooks for more information. THESE DRAWINGS REPRESENT THE VESSEL'S CONTEMPORARY APPEARANCE AND NOT AS ORIGINALLY CONCEPTED.



INBOARD PROFILE

revisions: edited from LSCG discussion

HAER MARITIME RECORDING PROGRAM

U.S. COAST GUARD CUTTER "BRAWLE", 1944
WATERFRONT AT LINCOLN AVE.
ST. CLAIR COUNTY

MICHELE

1.00

HISTORIC AMERICAN
ENGINEERING RECORD
ME-503

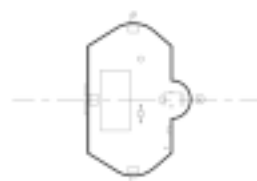
1000

USCGC BRAMBLE-DECK PLANS

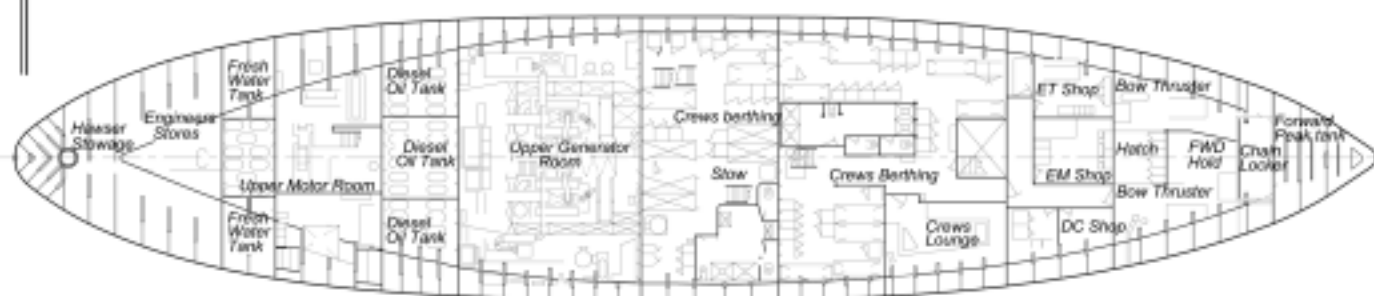
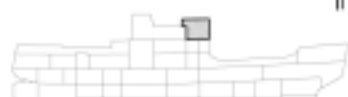
NOTE: This drawing was traced from original design drawings of the USCG Cutter BRAMBLE. HAER did not field check dimensions or arrangement of features; see HAER Field Notebooks for more information.



PLAN OF BRIDGE



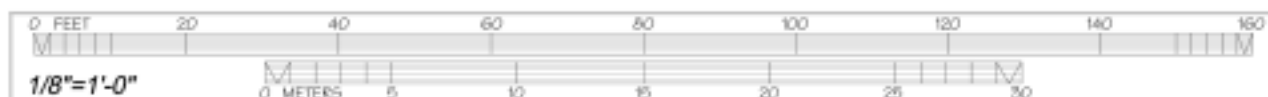
PLAN AT TOP OF WHEELHOUSE



SECOND DECK PLAN



HOLD LEVEL PLAN



DESIGNED BY: edited from USCG drawings

UNITED STATES COAST GUARD
RECORDING PROGRAM
HAER 1-10000-10000

PORT HURON VIC.

U.S. COAST GUARD CUTTER "BRAMBLE"- 1944
WATERFRONT AT LINCOLN AVE.
ST. CLAIR COUNTY

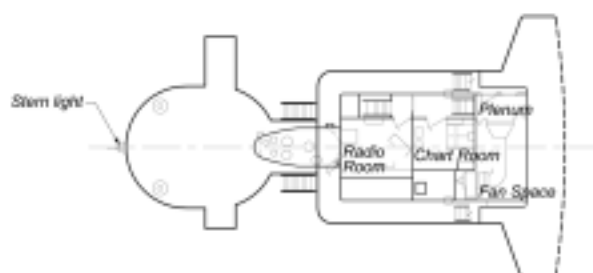
MICHIGAN 2 - 8

HISTORIC AMERICAN
ENGINEERING RECORD
ME-323

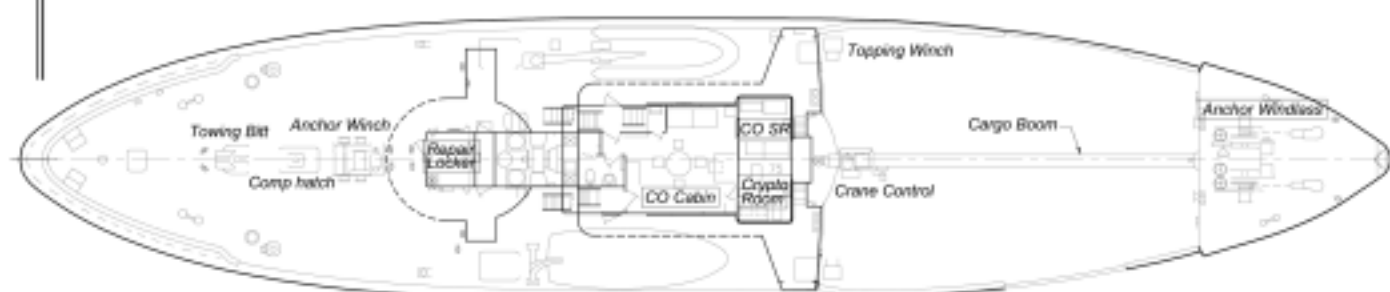
© 2000-2001, HAER. PHOTO: THE NATIONAL ARCHIVES. REPRODUCTION OF THIS DRAWING IS FOR EDUCATIONAL PURPOSES ONLY.

USCGC BRAMBLE-DECK PLANS

NOTE: This drawing was traced from original design drawings of the USCG Cutter BRAMBLE. HAER did not field check dimensions or arrangement of features; see HAER Field Notebooks for more information.



**PLAN AT TOP OF
UPPER DECK HOUSE**



PLAN OF UPPER & FORECASTLE DECKS



MAIN DECK PLAN



DESIGNED BY: edited from USCG drawings

UNITED STATES COAST GUARD
RECORDING PROGRAM
www.haer.uscg.mil

PORT HURON VIC.

U.S. COAST GUARD CUTTER "BRAMBLE", 1944
WATERFRONT AT LINCOLN AVE.
ST. CLAIR COUNTY

MICHIGAN

3 - 6

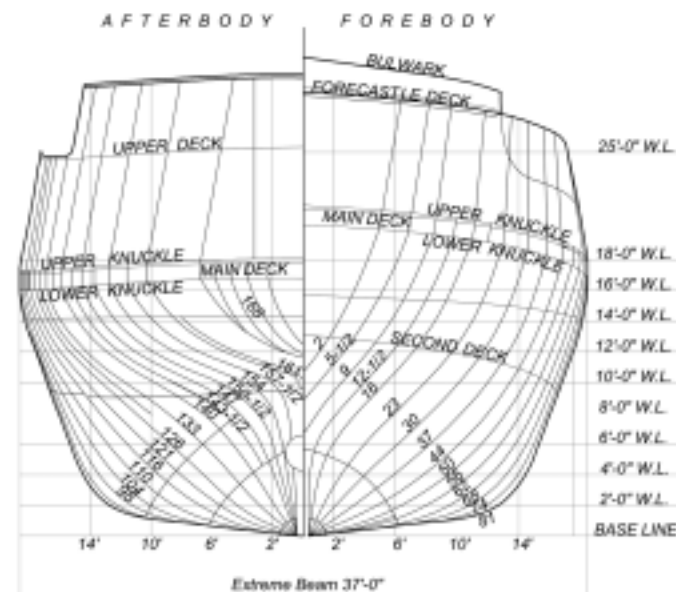
HISTORIC AMERICAN
ENGINEERING RECORD
ME-323

© REPRODUCED FROM HAER. THE NATIONAL HISTORIC ENGINEERING RECORD. ALL RIGHTS RESERVED. HAER IS A SERVICE OF THE NATIONAL ARCHIVES.

USCGC BRAMBLE - BODY PLAN

TABLE OF OFFSETS

		FOREBODY STATIONS														
		2	5 1/2	9	12 1/2	16	23	30	37	44	50	56	62	68	74	81
HALF-BREADTHS	2' W.L.				0-6-0	0-7-4	1-3-2	2-3-4	3-3-3	4-9-7	6-6-5	7-11-5	8-5-5	10-9-4	11-9-5	12-7-2
	4' W.L.				0-5-7	1-0-7	2-5-2	4-0-1	5-10-7	7-3-6	9-4-8	10-10-2	12-1-5	13-2-0	13-11-1	14-5-3
	6' W.L.				0-10-6	1-11-4	2-11-6	3-1-4	4-2-6	10-1-2	11-6-5	12-9-3	13-9-1	14-5-6	14-11-6	15-3-2
	8' W.L.		--	0-10-4	2-2-7	3-5-5	5-11-2	6-2-7	10-3-1	11-11-4	13-1-7	14-1-3	14-10-4	15-0-0	15-9-4	16-0-3
	10' W.L.		1-0-1	2-5-2	3-11-6	5-4-2	7-11-0	10-1-1	11-11-1	13-4-6	14-4-5	15-2-1	15-9-5	16-2-0	16-6-6	16-9-1
	12' W.L.	1-0-2	2-7-6	4-2-7	6-9-9	7-1-8	9-7-5	11-8-0	13-3-5	14-8-7	16-4-7	16-1-0	16-7-3	17-0-1	17-3-5	17-5-7
	14' W.L.	2-3-7	4-0-7	5-5-1	7-1-7	8-6-2	10-11-0	12-10-0	14-4-0	15-5-6	16-2-6	16-10-2	17-4-1	17-6-2	17-11-2	18-2-1
	16' W.L.	3-3-6	5-2-1	6-8-6	8-3-6	9-7-0	11-10-1	13-9-2	15-1-0	16-2-2	16-11-0	17-6-2	17-11-6	18-2-6	18-4-5	18-5-6
	22' W.L.	--	--	--	--	--	--	--	--	--	--	--	--	--	--	--
25' W.L.	5-10-1	7-8-4	9-2-4	10-5-4	11-5-3	--	--	--	--	--	--	--	--	--	--	--
HEIGHTS above base	2' BUTT.	13-5-1	15-2-4	9-4-7	7-9-3	6-0-7	3-3-6	1-10-3	1-1-1	0-7-7	0-4-4	0-2-4	0-2-2	0-2-2	0-2-2	0-2-2
	6' BUTT.	--	17-7-7	14-8-2	12-3-6	10-8-3	8-0-6	6-10-5	4-7-0	2-8-4	1-9-4	1-1-3	0-9-0	0-7-6	0-7-6	0-7-6
	10' BUTT.	--	--	--	25-10-1	16-11-0	12-5-7	9-10-5	7-8-5	5-10-6	4-6-0	3-3-5	2-3-6	1-7-2	1-2-5	1-1-3
	14' BUTT.	--	--	--	--	--	--	16-10-6	13-2-0	10-11-7	9-4-0	7-9-6	6-4-4	5-2-0	4-1-2	3-4-1
		AFTERBODY STATIONS														
		98	104	110	116	121	126	133	140	143 1/2	147	150 1/2	154	157 1/2	161	168
HALF-BREADTHS	2' W.L.	11-3-3	9-11-7	8-5-3	6-9-5	5-5-7	4-3-1	2-10-3	1-10-2	1-5-0	1-2-3	0-11-2	0-8-4	0-5-6	0-0-0	--
	4' W.L.	13-4-8	12-4-3	11-0-3	9-5-8	8-0-4	6-7-0	4-8-4	3-2-7	2-5-7	1-11-0	1-5-4	1-0-3	0-7-3	0-0-0	--
	6' W.L.	14-7-3	13-10-3	12-10-2	11-5-5	10-3-0	8-9-2	6-7-2	4-7-3	3-7-7	2-9-2	2-0-1	1-4-2	0-9-0	0-0-0	--
	8' W.L.	15-7-0	15-1-0	14-4-1	13-4-2	12-3-3	11-0-2	9-11-3	6-7-2	5-4-4	4-2-0	2-11-7	1-10-6	0-11-3	0-0-0	--
	10' W.L.	16-6-0	16-2-0	15-7-7	14-11-4	14-2-3	13-3-2	11-8-7	9-5-7	8-5-7	7-0-7	5-6-7	3-10-7	2-0-4	0-2-3	--
	12' W.L.	17-4-3	17-1-6	16-9-7	16-4-2	15-10-6	15-3-6	14-3-0	12-10-5	12-0-4	11-0-4	9-10-2	8-5-4	6-10-3	5-1-2	1-2-2
	14' W.L.	18-1-2	17-11-7	17-8-1	17-5-6	17-1-3	16-8-7	15-10-3	14-9-2	14-0-6	13-2-7	12-3-3	11-1-7	9-8-7	8-3-6	4-7-0
	16' W.L.	--	--	--	--	--	--	--	--	--	--	--	--	--	--	--
	22' W.L.	17-7-8	17-7-2	17-6-5	17-2-7	16-11-7	16-7-8	15-11-4	15-0-0	14-5-0	13-8-6	12-19-6	11-11-1	10-9-3	9-5-3	6-0-7
25' W.L.	--	--	--	--	--	--	--	--	--	--	--	--	--	--	--	--
HEIGHTS above base	2' BUTT.	0-2-2	0-2-2	0-2-2	0-2-8	0-4-4	0-7-6	1-2-5	2-2-2	2-11-6	4-2-4	5-11-4	8-2-5	9-11-5	10-11-0	12-3-7
	6' BUTT.	5-7-6	5-9-0	0-11-0	1-6-3	2-4-2	3-5-6	5-4-6	7-5-6	9-6-2	9-5-0	10-2-3	10-11-0	11-7-6	12-5-0	15-7-2
	10' BUTT.	1-4-7	2-0-0	3-1-0	4-5-8	5-9-1	7-1-2	8-9-3	10-1-6	10-8-2	11-4-6	12-1-0	12-11-0	14-2-2	16-1-6	--
	14' BUTT.	4-10-5	6-2-4	7-5-2	9-0-2	9-0-4	10-0-1	11-9-1	13-0-3	13-11-0	15-2-0	--	--	--	--	--



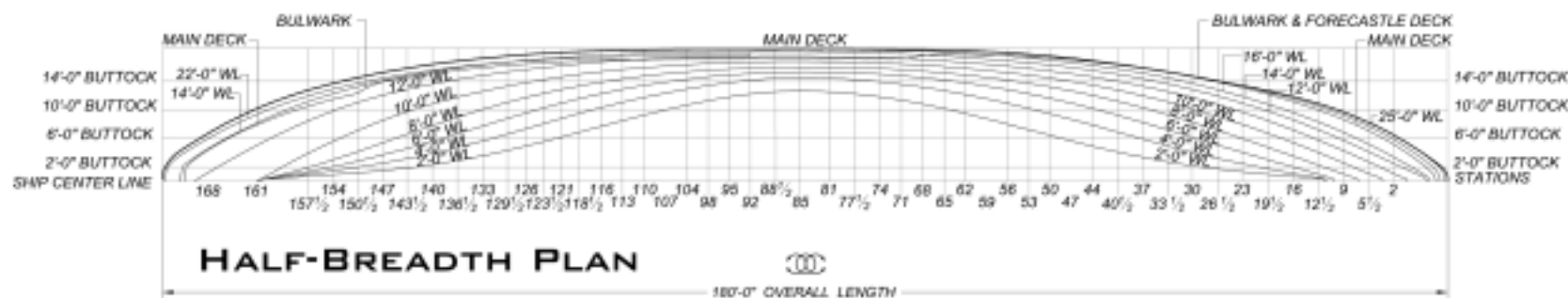
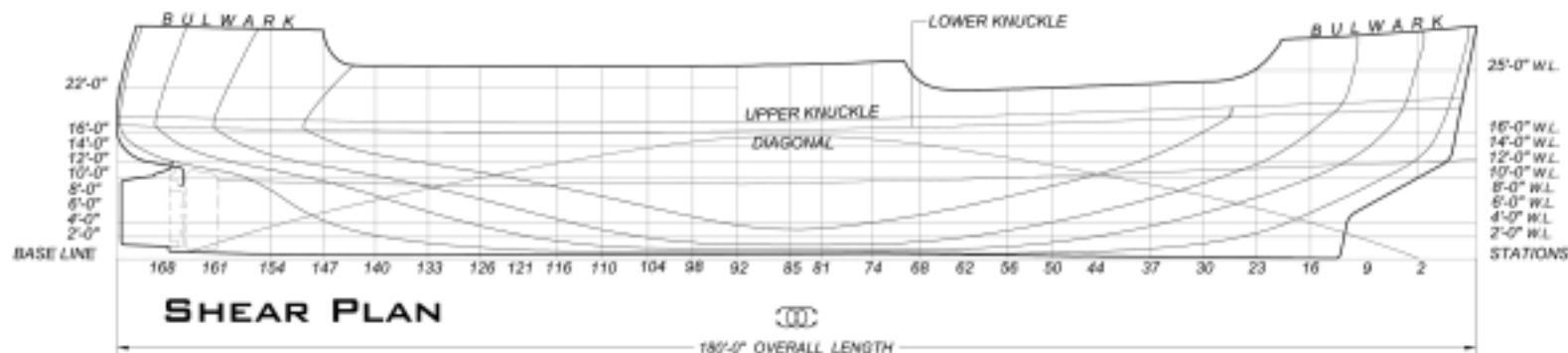
SCALE: 1" = 2 1/2'

NOTE

This drawing was traced from historic drawings of the USCG Cutter BRAMBLE. HAER did not field check dimensions or arrangement of features. For more information, see HAER Field Notebooks.

USCGC BRAMBLE HALF-BREADTH & SHEAR PLANS

NOTE: This drawing was traced from original design drawings of the USCG Cutter BRAMBLE. HAER did not field check dimensions or arrangement of features; see HAER Field Notebooks for more information.



USCGC BRAMBLE SHELL EXPANSION PLAN

NOTE: This drawing was traced from original design drawings of the USCG Cutter BRAMBLE. HAER did not field check dimensions or arrangement of features; see HAER Field Notebooks for more information.

